



COURSES FOR EXCHANGE STUDENTS

2021-2022



UNIVERSITY OF APPLIED
SCIENCES AND ARTS



BACHELOR & MASTER PROGRAMMES

PXL-BUSINESS

Campus Elfde Linie - Hasselt

- **Bachelor of Business Management**
 - Accountancy and Tax
 - Business Management
 - Finance and Insurance
 - Logistics Management
 - Marketing
 - Paralegal Studies
- **Bachelor of Office Management**
 - Business and Languages
 - Healthcare Management
 - Business Translation and Interpreting

PXL-DIGITAL

Campus Elfde Linie - Hasselt

- **Bachelor of Applied Information Technology**
 - Application Development
 - System and Network Management
 - Software Management
- **Bachelor of Electronics-ICT**

PXL-EDUCATION

Campus Vildersstraat - Hasselt

- **Bachelor of Teacher Education: Pre-Primary Education**
- **Bachelor of Teacher Education: Primary Education**
- **Bachelor of Teacher Education: Secondary Education**
 - General Subjects
 - Physical Education

PXL-GREEN & TECH

Campus Diepenbeek - Diepenbeek

- **Bachelor of Electromechanics**
 - Heating, Ventilation, Airconditioning and Cooling
 - Industrial Maintenance
- **Bachelor of Construction**
- **Bachelor of Agro- and Biotechnology:**
 - Biotechnology
 - Greenery Management

PXL-HEALTHCARE

Campus Guffenslaan - Hasselt

- **Bachelor of Occupational Therapy**
- **Bachelor of Midwifery**
- **Bachelor of Nursing**

PXL-MAD SCHOOL OF ARTS

Campus Elfde Linie - Hasselt

- **Bachelor and Master of Visual Arts**
 - Graphic Design
 - Fine Arts
 - Jewellery Design, Gold- and Silversmithing

PXL-MEDIA & TOURISM

Campus Vildersstraat - Hasselt

- **Bachelor of Communication Management**
 - Commercial Communication
 - Public Relations and Information
- **Bachelor of Journalism**
- **Bachelor of Tourism and Leisure Management**

PXL-MUSIC

Campus Bootstraat - Hasselt

- **Bachelor of Pop and Rock Music**
 - Music Performance
 - Music Management
 - Music Technology

PXL-SOCIAL WORK

Campus Vildersstraat - Hasselt

- **Bachelor of Social Work**
 - Social Work and Social Care
 - Social Work and Human Resources

BRUGES



GHENT



ANTWERP



BRUSSELS



LEUVEN



LIÈGE



PXL UNIVERSITY OF APPLIED SCIENCES AND ARTS

WELCOME TO PXL!

- A young dynamic and vibrant organisation
- A centre of expertise for innovation, creativity and entrepreneurship
- A long and strong international tradition
- 10000 students
- 9 departments / faculties
- 5 campuses in Hasselt and Diepenbeek
- In the heart of Europe
- Close to Brussels, the decision centre of Europe

Studying at PXL equals

- Practice-oriented study programmes: you acquire knowledge and develop skills that are crucial in your future job
- A competency based education system
- A strong focus on IT in education
- Student centred and interactive teaching methods, case studies, projects, ...
- Good and respectful contact between students and teaching staff
- International modules and courses taught in English
- Language courses and welcome activities for international students
- Excellent student services: housing service, bicycle rent, sports facilities, job service for students, student catering, ...



HASSELT



MAASTRICHT

CAMPUSES

The 9 departments of PXL are located in Hasselt and Diepenbeek.

➤ Campus Vilderstraat, Hasselt

PXL-Media & Tourism
PXL-Education
PXL-Social Work

➤ campus Elfde Linie, Hasselt

PXL-Business
PXL-Digital
PXL-MAD

➤ Campus Corda, Hasselt

PXL-Digital

➤ Campus Diepenbeek, Diepenbeek

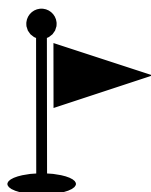
PXL-Green & Tech

➤ Campus Bootstraat, Hasselt

PXL-Music

➤ Campus Guffenslaan, Hasselt

PXL-Healthcare



STUDENT SERVICES

Housing service

The PXL housing service assists you in finding a room at a reasonable price on the private market. Note that PXL doesn't have own student residences.



Laptop service

The PXL laptop service assists students with configuring their laptops, e-mail settings and technical problems.



Student catering

PXL offers student catering on our campuses.

Bike rental

Cycling is the ideal way of travelling around Hasselt and Diepenbeek. Students can rent a bike for €25 per year.

Campus Pass

With a campus pass (€ 25) students can travel by bus in Hasselt and between Hasselt and the Campus in Diepenbeek. The campus pass is valid for one year.



Contact

Studentservices@pxl.be



STUDY LOAD AND ECTS CREDITS

- A full time programme consists of 30 ECTS for one semester and 60 ECTS credits for a whole academic year.
- 1 ECTS credit corresponds to 25 to 30 working hours, all included (attending classes, working and studying at home, passing exams, ...).

ACADEMIC CALENDAR

- Summer School Wilderness & Adventure Therapy:
06/09/2021 - 10/09/2021
- Summer School English:
10/09/2021 - 17/09/2021
- Start Autumn semester:
20/09/2021
- Start Spring semester:
14/02/2022
- Autumn Holidays:
01/11/2021 - 07/11/2021
- Christmas Holidays:
27/12/2021 - 09/01/2022
- Easter Holidays:
04/04/2022 - 17/04/2022
- Summer Holidays:
04/07/2022 - 21/08/2022



APPLICATION EXCHANGE PROGRAMMES

APPLICATION PROCEDURE

Students from higher education institutions that have an inter-institutional agreement with PXL can apply for a student exchange period. The application documents consist of:

- Learning agreement
- Possible additional documents. Check the programme information.

The application procedure is online. All the forms must be filled in and uploaded in Mobility Online.

See www.pxl.be/international > study@PXL > Application exchange programmes

LEARNING AGREEMENT

The learning agreement contains the courses you are planning to take and the ECTS credits allocated. The overview in this brochure can help you with the selection. You can't combine courses from different departments.

The course catalogue is available on www.pxl.be/international.

The learning agreement contains minimum 25 ECTS each semester (except for internship students).

APPLICATION DEADLINES

All the forms have to be filled in, approved and signed by the home institution and uploaded by:

- 01/06/2021 for students applying for the Autumn semester
- 01/11/2021 for students applying for the Spring semester

KNOWLEDGE OF ENGLISH

We expect bachelor students to have level B1 and master students to have level B2 in English, according to the European Framework of Reference.



DEPARTMENT PXL-BUSINESS

Campus Elfde Linie – Hasselt

EXCHANGE COURSES IN BUSINESS AND OFFICE MANAGEMENT

An English taught programme for international exchange students in the study field of business and office management, on bachelor level.

The content of the courses is available on www.pxl.be/international.

Programme

Course unit	Autumn ECTS credits
Understanding Global Cultures	3
International Law: Special Topics	3
Doing Business with New Markets	6
Applied Market Research SME's	3
Digital Marketing Essentials	3
Services Marketing	3
Customer Relationship Management	3
European Studies	3
European Law	4
Risk Management & Control	3
Introduction in E-sports	3
French 1 Business Management	4
French 3 Business Management	3
English 2 Business Management	3
English 3 Business Management	3
Spanish 2 Business Management	3
French 3 Marketing	3
English 3 Marketing	3
French 3 Paralegal Studies	3
English 3 Paralegal Studies	3

Language courses

Course unit	Autumn ECTS credits
Survival Dutch	3
Summer School English (10/09/2021-17/09/2021)	3
English for eXchange Autumn	3



PXL BUSINESS



PXL DIGITAL

DEPARTMENT PXL-DIGITAL

Campus Elfde Linie - Hasselt

EXCHANGE COURSES IN APPLIED INFORMATION TECHNOLOGY

An English taught programme for international exchange students who have obtained at least 60 ECTS in the study field of Applied Information Technology, on bachelor level.

The content of the courses is available on www.pxl.be/international.

Programme Artificial Intelligence & Robotics

Course unit	Spring ECTS credits
Artificial Intelligence & Robotics	9
Programming Advanced	9
Research Project (AI): individual project	6
Research Project (AI): group project	6



DEPARTMENT PXL-DIGITAL

Campus Elfde Linie - Hasselt

EXCHANGE COURSES IN ELECTRONICS-ICT

A programme for international exchange students who have obtained at least 120 ECTS in the study field of electronics and computer science, on bachelor level. All courses are taught in Dutch, tutoring and course material is offered in English.

The content of the courses is available on www.pxl.be/international.

Programme

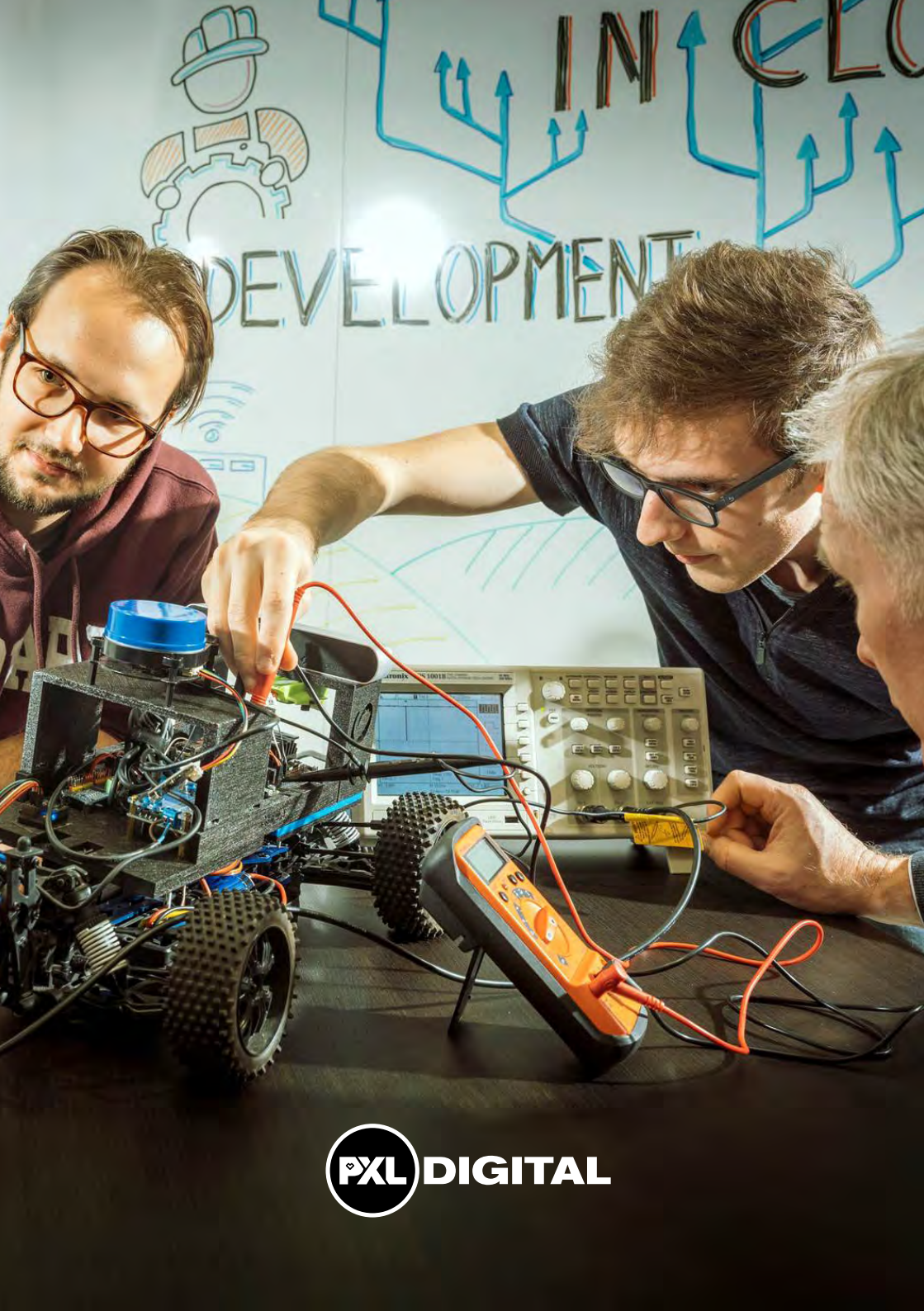
Course Unit	Autumn ECTS credits	Spring ECTS credits
C++ programming	5	
IoT Technology	3	
Mechatronics with LabVIEW	3	
Python Programming for Smart Systems	4	
Research Project*	5	5
Embedded Project	6	
Building Automation		6
System on Chip		6
Final Project **, **	22	22

* Students can only register for this course in one semester, Autumn or Spring

** Approval and allocation is based on a CV with relevant experience and a transcript of records.

Language courses

Course unit	Autumn ECTS credits
Survival Dutch	3
Summer School English (10/09/2021-17/09/2021)	3
English for eXchange Autumn	3



INTEL
DEVELOPMENT



PXL EDUCATION

DEPARTMENT PXL-EDUCATION

Campus Vildersstraat - Hasselt

EXCHANGE COURSES IN EDUCATION

An English taught programme for international exchange students in the study field of pre-primary, primary and secondary education, on bachelor level.

The content of the courses is available on www.pxl.be/international.

Programme

Course unit	Autumn ECTS credits
The Internationalist*	6
Multilinguism	6
Personal and Professional Development	6
English 2a**	6
English 3**	6
Module of choice - choice between 2 options	
School Policy and Organisation	6
Diversity and Classroom Management	6
Observation Practice	3
Traineeship: Teaching Practice***	6

* This course is obligatory for all students.

** Only for students with a specialisation in English.

*** Limited access based on transcript of records.

Language courses

Course unit	Autumn ECTS credits
Survival Dutch	3
Summer School English (10/09/2021-17/09/2021)	3
English for eXchange Autumn	3

DEPARTMENT PXL-GREEN & TECH

Campus Diepenbeek

EXCHANGE COURSES IN BIOTECHNOLOGY AND GREENERY MANAGEMENT

A programme for international exchange students who have obtained at least 120 ECTS in the study field of biotechnology and greenery management, on bachelor level. Courses are taught in Dutch with tutoring and course material in English.

The content of the courses is available on www.pxl.be/international.

Programme Greenery Management

Course unit	Autumn ECTS credits	Spring ECTS credits
Bachelor Project in Greenery Management*,**	21	21
Global Engagement**	4	4
Project	5	
International Exchange Week		5
Field study in Ecology and Environment		5

* approval and allocation are based on a CV with relevant experience and a transcript of records.

** Students can only register for this course in one semester, Autumn or Spring





PXL GREEN & TECH



PXL GREEN & TECH

Programme Biotechnology

Course unit	Autumn ECTS credits	Spring ECTS credits
Global Engagement*	4	4
Food technology		
Bachelor Project in Food Technology or Individual Project in Food Technology*,**	22	22
Specialisation Project: Food Technology	4	5
Environmental Technology		
Bachelor Project in Environmental Technology or Individual Project in Environmental Technology*,**	22	22
Specialisation Project: Environmental Technology	4	
Molecular Biology		
Bachelor Project in Molecular Biology or Individual Project in Molecular Biology*,**	22	22
Specialisation Project: Molecular Biology	4	5

* Students can only register for this course in one semester, Autumn or Spring.

** Approval and allocation are based on a CV with relevant experience and a transcript of records.

Language courses

Course unit	Autumn ECTS credits
Survival Dutch	3
Summer School English (10/09/2021-17/09/2021)	3
English for eXchange Autumn	3



DEPARTMENT PXL-GREEN & TECH

Campus Diepenbeek

EXCHANGE COURSES IN CONSTRUCTION

A programme for international exchange students who have obtained at least 120 ECTS in the study field of construction or other technical fields of study, on bachelor level. Courses are taught in Dutch with tutoring and course material in English.

The content of the courses is available on www.pxl.be/international.

Programme

Course unit	Autumn ECTS credits	Spring ECTS credits
CAD Modeling of a Footbridge in 3D	4	
CAD Modeling of Building in 3D & BIM Technology	4	
Bachelor Project*	25	25
Entrepreneurial Project	3	3
Communication & Research		3
LifeLong Learning		3

* Students can only register for this course in one semester, Autumn or Spring. Approval and allocation is based on a CV with relevant experience and a transcript of records.

Language courses

Course unit	Autumn ECTS credits
Survival Dutch	3
Summer School English (10/09/2021-17/09/2021)	3
English for eXchange Autumn	3



PXL GREEN & TECH



PXL GREEN & TECH

DEPARTMENT PXL-GREEN & TECH

Campus Diepenbeek

EXCHANGE COURSES IN ELECTROMECHANICS

A programme for international Exchange students who achieved at least 120 ECTS in electromechanics, on bachelor level.

Courses are taught in Dutch with tutoring and course material in English.

The content of the courses is available on www.pxl.be/international.

Programme

Course unit	Autumn ECTS credits	Spring ECTS credits
Mechanical Drawing	3	
Technical language: German	3	
Technical project 2	3	
CAD and Reverse Engineering	8	
Robotics	5	
International Bachelor Project*, **	20	20
Entrepreneurial Project	3	3
Global engagement**	3	3
Technical project 1		4
Applied technical language: German		3
CAD		4

* Approval and allocation is based on a CV with relevant experience and a transcript of records.

** Students can only register for this course in one semester, Autumn or Spring.

Language courses

Course unit	Autumn ECTS credits
Survival Dutch	3
Summer School English (10/09/2021-17/09/2021)	3
English for eXchange Autumn	3

DEPARTMENT PXL-HEALTHCARE

Campus Guffenslaan – Hasselt

EXCHANGE COURSES IN HEALTHCARE

A programme for international exchange students who have obtained at least 120 ECTS in nursing, occupational therapy or midwifery, on bachelor level. The language of communication is English.

The content of the courses is available on www.pxl.be/international.

Before arrival students of the department PXL-Healthcare have to submit

- a report in English of their blood sample results stating that the student is immune to Hepatitis A and B
- a recent negative result for the intradermal Tuberculosis control. If necessary, a TB-control will be done in Hasselt upon arrival

All healthcare students will have a general health check before starting the internship.

Programme Nursing

Students choose at least one internship of 8 weeks.

Course unit	Autumn ECTS credits	No semester ECTS credits
The Internationalist*	5	
Elective Course Summer Course Wilderness & Adventure Therapy**	5	
Internship in General Nursing: 8 weeks		12
Internship Surgical Nursing: 8 weeks		12
Internship Community Care: 8 weeks		12
Internship in General Nursing: 4 weeks		6
Internship Surgical Nursing: 4 weeks		6
Internship Community Care: 4 weeks		6

*This course unit is obligatory for all students (autumn).

** Organised from 6/9/2021 until 10/9/2021. Participation fee approx. €300.



 **PXL HEALTHCARE**



 **PXL HEALTHCARE**

>>>>

Programme Midwifery

Course unit	Autumn ECTS credits	No semester ECTS credits
The Internationalist*	5	
Professional Midwifery Practice for International students, part 1		15
Professional Midwifery Practice for International students, part 2		5

*This course unit is obligatory for all students (autumn).

Programme Occupational Therapy

Course unit	Autumn ECTS credits	Spring ECTS credits
The Internationalist*	5	
Integration OT Competences: placement 1	12	
Summer School Wilderness & Adventure Therapy**	5	
Project Work: placement	20	20
Project Work: placement		12
Integration OT Competences: placement 2		12

*This course unit is obligatory for all students (autumn).

** Organised from 6/9/2021 until 10/9/2021. Participation fee approx. €300.

Language courses

Course unit	Autumn ECTS credits
Survival Dutch	3
Summer School English (10/09/2021-17/09/2021)	3
English for eXchange Autumn	3

DEPARTMENT PXL-MAD

Campus Elfde Linie – Hasselt

EXCHANGE COURSES IN VISUAL ARTS - BACHELOR

A programme for international exchange students who have obtained at least 120 ECTS in visual arts: graphic design, fine arts and object and jewellery on bachelor level. Individual coaching in English.

The content of the courses is available on www.pxl.be/international.

A motivation letter and an extended electronic artistic and personal portfolio presenting a minimum of 20 arts works must be submitted. The approval of the application is based on your motivation and portfolio.

Programme

Course unit	Autumn ECTS credits	Spring ECTS credits
Choice between 10 studios*	16	
Studio Graphic Design 1		
Studio Illustrative Design 1		
Studio Interaction and Motion Design 1		
Studio Advertising Design 1		
Studio Ceramics 1		
Studio Painting 1		
Studio Printmaking 1		
Studio Sculpture and Installation 1		
Studio Object and Jewellery 1		
Studio Open Lab 1		
Group Exhibition Project 1**	6	
Choice of max 8 ECTS		
Studio extension 1	8	
Drawing 1	5	
Image Analysis 1	3	



SCHOOL OF ARTS



school OF ARTS

>>>>

Course unit	Autumn ECTS credits	Spring ECTS credits
Choice between 10 studios*	18	
Studio Graphic Design 2		
Studio Illustrative Design 2		
Studio Interaction and Motion Design 2		
Studio Advertising Design 2		
Studio Ceramics 2		
Studio Painting 2		
Studio Printmaking 2		
Studio Sculpture and Installation 2		
Studio Object and Jewellery 2		
Studio Open Lab 2		
Group Exhibition Project 2**		6
Drawing 2		6

*Students can only choose one studio per semester

**This course is obligatory for all students.

Language courses

Course unit	Autumn ECTS credits
Survival Dutch	3
Summer School English (10/09/2021-17/09/2021)	3
English for eXchange Autumn	3

DEPARTMENT PXL-MAD

Campus Elfde Linie – Hasselt

EXCHANGE COURSES IN VISUAL ARTS - MASTER

A research internship with individual coaching in English for exchange students at a master level in visual arts. www.pxl-mad.be/en/mad-research.

An extended electronic artistic and personal portfolio presenting a minimum of 20 arts works must be submitted. Please contact the departmental coordinator of PXL-MAD for information on possible projects, expectations as well as the application procedure.

Programme

Course unit	Number of weeks	ECTS credits
Research Internship Medium	7	9
Research Internship Large	10	12
Research Internship Extra Large	13	15

Language courses

Course unit	Autumn ECTS credits
Survival Dutch	3
Summer School English (10/09/2021-17/09/2021)	3
English for eXchange Autumn	3



SCHOOL OF ARTS

DEPARTMENT PXL-MEDIA & TOURISM

Campus Vildersstraat - Hasselt

EXCHANGE COURSES IN COMMUNICATION MANAGEMENT & JOURNALISM

An English taught programme for international exchange students in communication management and journalism, on bachelor level. Courses of 'communication management and journalism' cannot be combined with courses of 'tourism and leisure management'.

The content of the courses is available on www.pxl.be/international.

Programme

Course unit	Specialisation	Autumn ECTS credits	Spring ECTS credits
Data Driven Communication	COM	3	
International Communication and Project	COM	3	
Omnichannel Retail	COM	3	
Campaign	COM	3	
Digital Strategy and Webdesign Portfolio	COM	6	
Masterclass Marketing Communication	COM	9	
Media in Belgium	COM	3	
Professional Communication 1	COM	3	
Spanish 1 - level A1	COM	3	
Spanish 2 - level B1	COM	4	
English for Journalism	JOU	6	
International Publishing	JOU	6	
European Integration – Belgium in Europe	JOU	4	
Radio and Television Journalism	JOU	6	
International Media Landscape	JOU	3	
English 2	COM		3
Spanish – level A2*	COM		3
Professional Communication 2	COM		3
Project Europe**	COM		3
International Pitch ***	COM		10
Internship XL	COM		23

* you can only choose this course if you've also followed Spanish 1 – level A1 in the 1st semester

** Project abroad (costs €500)

*** Approval and allocation is based on a CV with relevant experience, your English language level (minimum B2) and a transcript of records, followed by an interview with the programme director.



Language courses

Course unit	Autumn ECTS credits
Survival Dutch	3
Summer School English (10/09/2021-17/09/2021)	3
English for eXchange Autumn	3

DEPARTMENT PXL-MEDIA & TOURISM

Campus Vildersstraat - Hasselt

EXCHANGE COURSES IN TOURISM AND LEISURE MANAGEMENT

An English taught programme for international exchange students in tourism and leisure management, on bachelor level. Courses of the 'tourism and leisure management' programme cannot be combined with other courses of the 'communication management and journalism' programme.

The course catalogue is available on www.pxl.be/international.

Programme

Course unit	Autumn ECTS credits
Destination Management	8
Tourism Practicals	5
Tourism Marketing	5
English 2	4
English 3	4
Data Driven Communication	3
International Communication and Project	3
Omnichannel Retail	3
Campaign	3
Digital Strategy and Webdesign Portfolio	6
Masterclass Marketingcommunication	9
Professional Communication 1	3
European Integration – Belgium in Europe	4
Spanish 1 - level A1	3
Spanish 2 - level B1	4

Language courses

Course unit	Autumn ECTS credits
Survival Dutch	3
Summer School English (10/09/2021-17/09/2021)	3
English for eXchange Autumn	3



PXL MEDIA & TOURISM



PXL MUSIC

DEPARTMENT PXL-MUSIC

Campus Bootstraat – Hasselt

EXCHANGE COURSES IN MUSIC

A programme for international exchange students who have obtained at least 120 ECTS in music studies, on bachelor level. The language of tutoring is English.

The course catalogue is available on www.pxl.be/international.

In addition to the application form and learning agreement, an extended electronic artistic and personal portfolio must be submitted. The approval of the application is based on this portfolio.

Programme Music Performance

Course unit	Autumn ECTS credits	Spring ECTS credits
Instrument (guitar, bass, drums, keys, vocals or electronic music)	8	8
Stage and Studio Performance	7	7
Soundlab	3	3
Research Project*	3	3
Music Production Analysis*	3	3
Songwriting – International Project	3	3
Interdisciplinary Project*	3	3

* Students can only register for this course in one semester, Autumn or Spring.

Programme Music Technology

Course unit	Autumn ECTS credits
STUDIO*	
Studio	12
Studio: Projects	6
Studio: Production & Producing	3
LIVE*	
PA	12
PA: Projects	6
Production Engineering in PA	3
Research Project	3
Music Production Analysis	3
Interdisciplinary Project	3

* Students have to choose between "Studio" or "Live".

>>>>

Music Management

Course unit	Autumn ECTS credits	Spring ECTS credits
Strategy in Music Management	6	
Tour Management		3
Event Management	3	
Project management*	4	4
Research Project*	3	3
Music Production Analysis*	3	3
Music Intermediaries*	3	3
Marketing and Promotion	4	5
Intellectual Property	3	
Interdisciplinary Project*	3	3

* Students can only register for this course in one semester, Autumn or Spring.

Language courses

Course unit	Autumn ECTS credits
Survival Dutch	3
Summer School English (10/09/2021-17/09/2021)	3
English for eXchange Autumn	3



PXL MUSIC



 **SOCIAL WORK**

DEPARTMENT PXL-SOCIAL WORK

Campus Vildersstraat – Hasselt

EXCHANGE COURSES IN SOCIAL WORK

An English taught programme for International exchange students in social work, on bachelor level.

The course catalogue is available on www.pxl.be/international.

Programme

Course unit	Autumn ECTS credits
The internationalist*	5
Social work research methodology	5
Applied research	5
Sociology of the family	5
Family and social law	5
Social methodology	5
Family life in comparative perspective	5
Wilderness & Adventure Therapy**	5

*This course is obligatory for all students.

** Organised from 6/9/2021 until 10/9/2021. Participation fee approx. €300.

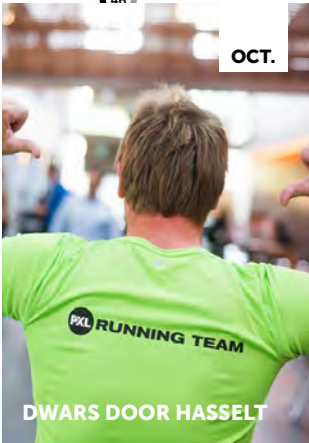
Language courses

Course unit	Autumn ECTS credits
Survival Dutch	3
Summer School English (10/09/2021-17/09/2021)	3
English for eXchange Autumn	3



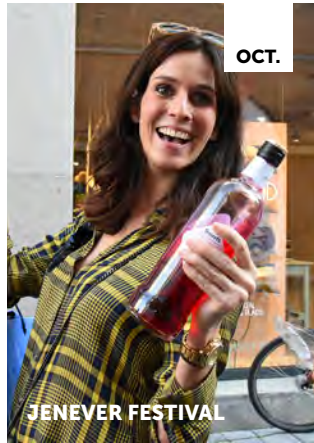
OCT.

STUDENT TAKE OFF



OCT.

DWARS DOOR HASSELT



OCT.

JENEVER FESTIVAL



APRIL

PXL-BREAKS OUT

PXL-PROM NIGHT



MAY

HASSELT STUDENT REGATTA



JUNE

Kris VAN DE SANDE PHOTOGRAPHER



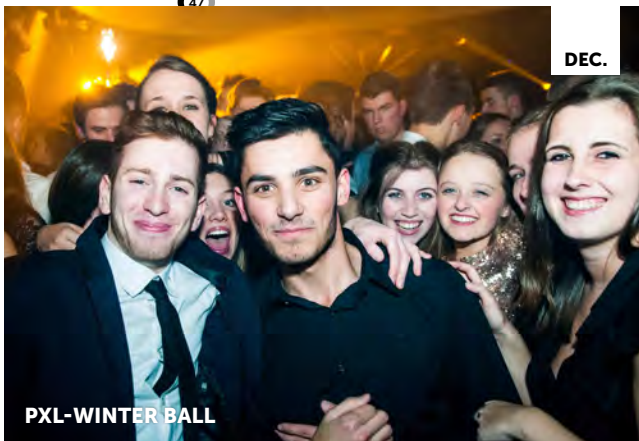
JULY

EXIT



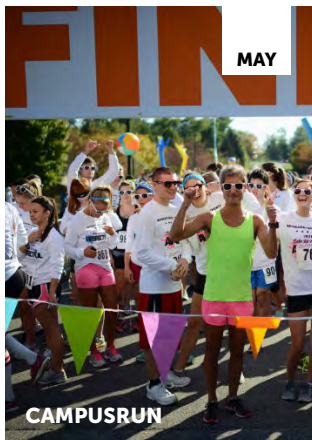
NOV.
JAN.

WINTERLAND



DEC.

PXL-WINTER BALL



MAY

CAMPUSRUN



MAY

VUURDOOP



AUG.

PUKKELPOP



SEPT.

FAIR

CONTACT

INTERNATIONAL RELATIONS OFFICE

PXL University of Applied Sciences & Arts – Hogeschool PXL

Elfde-Liniestraat 23 – Building D

B-3500 Hasselt

Belgium

www.pxl.be/international

international@pxl.be

incoming@pxl.be



INTERNATIONAL